

six x six

“six x six’ is an attractive, low cost and constantly adaptable community housing system.”

★★★★★

A.A. GILL

not been to ‘six x six’ before?

- choose your **SPACE**
- **steel frame and services included**
- design and **CONSTRUCT** your own internal environment
- **GROW** your community

space

Contribution to Steel Frame
£8,500

providing the potential for 25m² of open floor space with access to a service point beneath each bay

SIP Module

£3,048.84 (approx)

structurally insulated panels provide the shell of the ample living space. panels can be selected to meet your individual requirements.

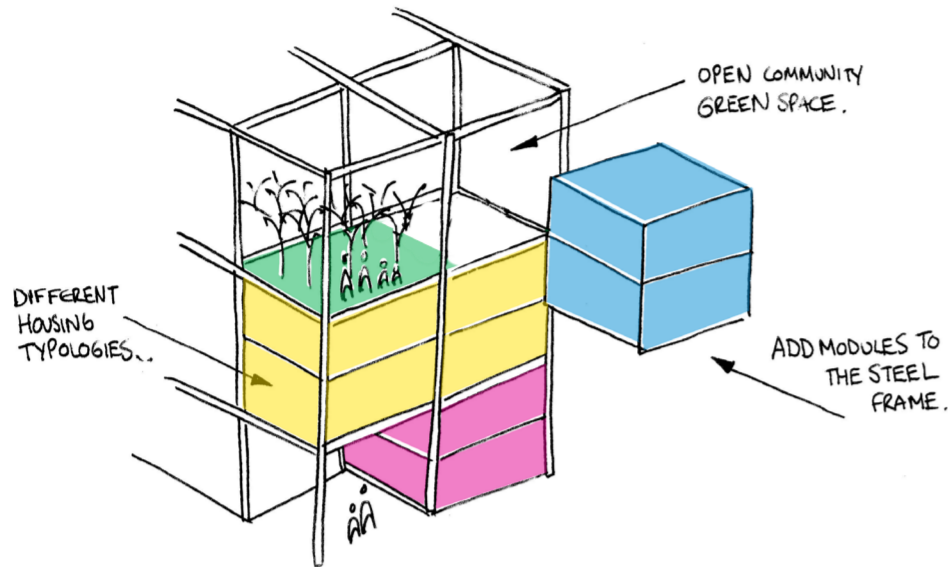
please select 5 from the following options (all floors come as standard):

walls:	blank wall	£471.44
	window	£541.31
	external door	£591.02
	internal door	£504.58
ceiling:	blank ceiling	£471.44
	skylight	£541.31
	aperture with stair	£432.32

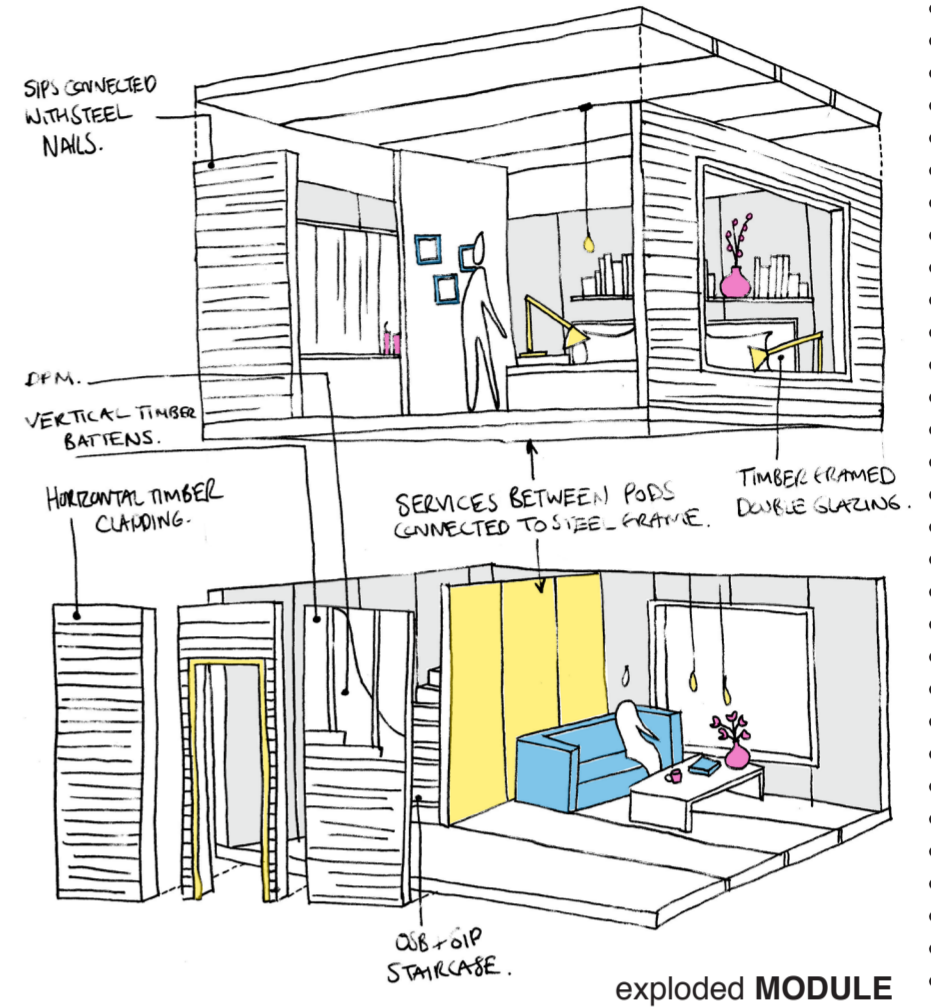
Personalised Cladding

£ 483.12

chosen by both yourself and the wider community. potential cladding materials include; brick, timber boarding, stone and render. please feel free to discuss these options with your waiter.



CONCEPT diagram



construct

plans not to scale



ONE/ TWO occupants
50m²

THREE occupants
75m²

FOUR/ FIVE occupants
100m²

Internal Partitions

constructed from cheap, easily obtainable OSB, the walls can be tailored to your own, changing, needs and requirements. opposite are some examples to give you inspiration.

DIY Furniture

from the remaining offcuts of OSB we encourage the design and implementation of furniture. this could be in the form of storage, kitchen units or even tables and chairs. be creative and get stuck in!

Space Heating

all pods take advantage of solar gain through large, south-facing apertures. this is supplemented with underfloor heating and high specification (0.13 W/m²K) insulation.

Still Hungry?

new baby? your teenager moves out? no problem, modules can be added or removed at any time using ‘drawer-like,’ steel runners.

grow

the steel structure not only provides spaces for individual family dwellings but also provides voids for community modules, for example; a library/ meeting space, crèche, laundry, tool-shed or cycle storage.

external community spaces such as; vegetable patches, chicken sheds or beehives can harness the production of food which can be shared amongst the community.

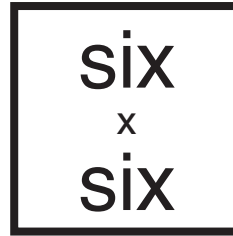
sustainable features such as rainwater storage tanks, reed beds and solar panels can be integrated over time.

the illustration opposite can be used for inspiration!



COMMUNITY masterplan

we hope to see you for another module very soon!



Self Build On A Shoestring

Itemised Cost Report

<u>WORKS PACKAGE</u>	<u>CONSTRUCTION ELEMENT</u>	<u>Quantity</u>	<u>Materials</u>	<u>TOTAL</u>
Works Package 1	Set Up, Clearance & Demolition	1	£1,000.00	£1,000.00
Works Package 2	Foundations	1	£560.00	£560.00
Works Package 3	Steel Frame	1	£8,500.00	£8,500.00
Works Package 4	Resurfacing	1	£300.00	£300.00
Works Package 5	External SIP Panels & Internal OSB Boards	1	£3,117.40	£3,117.40
Works Package 6	DPM	1	£270.00	£270.00
Works Package 7	Drainage & Service Trenchwork	1	£4,899.04	£5,169.04
Works Package 8	Cladding & Timber Battens	1	£483.12	£483.12
Works Package 9	Joinery (Inc. Scaffolding)	1	£2,000.00	£2,000.00
Works Package 10	Kitchen & Utility Units	1	£1,000.00	£1,000.00
Works Package 11	Internal Decoration & Finishes	1	£405.60	£405.60
Works Package 12	Ground Floor Screed	1	£315.00	£315.00
Works Package 13	External Staircase	1	£2,000.00	£100.00
Works Package 14	Roof Garden / Landscaping	1	£1,000.00	£1,000.00
Community Input	5% of above work packages			£1,211.01
<u>TOTAL</u>				<u>£25,431.17</u>

Some items are an essential cost to contribute towards the initial development of the SIX X SIX development. Initial items include labour, materials and assembly cost. (All costs include an additional 5% sundries) Items specific to POD & households require some self assembly.

NB: This is the cost of one pod only. If additional pods are required, quantities must be increased for desired items.